

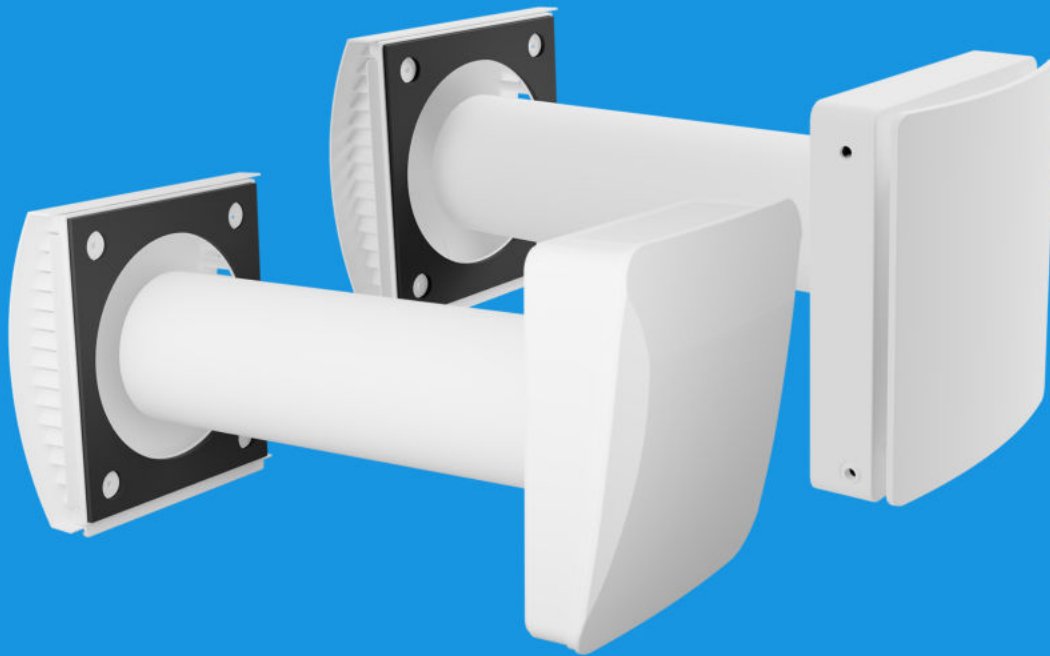
Installation Hole  
**120mm**

# MINI SINGLE ROOM ENERGY RECOVERY VENTILATOR

**97%** up to

Regeneration  
Efficiency

- ✓ *Easy Installation with Small Hole of 120mm*
- ✓ *High Efficiency*
- ✓ *Quiet Operation*
- ✓ *Balance Ventilation*



-  Elegant decorative front panel
-  Reversible fan with low energy consumption
-  Auto shutter to prevent air back drafting
-  Different outer hoods are optional for indoor installation
-  Humidity control
-  Wireless pairing operation function optional
-  Silent operation
-  F7 [MERV 13] filter optional
-  Mold prevention
-  WIFI function optional

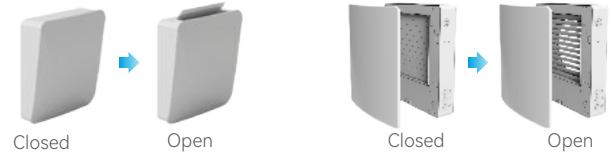
## REVERSIBLE DC FAN

The reversible DC duct fan is characterised by its low power consumption and silent operation. The fan motor features built-in thermal protection and ball bearings for a long lifespan.



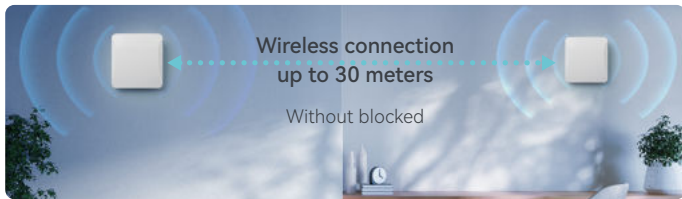
## AUTO SHUTTER

Auto shutter can prevent the insects entering and the cold air flowing backward when the unit stops.



## OPTIONAL WIRELESS PAIRING OPERATION

- Wireless control
- No extra controller
- No extra costs for installation
- No impact on existing decoration



## OPTIONAL WIFI FUNCTION

The remote control is standard, while WIFI function is optional. It has the functions of running mode selection, fan speed control, filter alarm, backlight off, timer, weekly schedule, pairing operation and optional humidity control. It works with Tuya APP and can connect with Tuya network appliances.



## MODEL DESCRIPTIONS

Model	Picture	Functions			
		Humidity Control	CO <sub>2</sub> Control	WiFi Function	Pairing Operation
AV-TTW3E		√	x	x	x
AV-TTW3E-W		√	x	√	x
AV-TTW3E-WL		√	x	√	√
AV-TTW3-W		x	√	√	√
AV-TTW3-WH		√	x	√	√

## TECHNICAL PARAMETERS

Voltage	100V-240V AC /50-60Hz	Sound Pressure Level (dB(A))	16.8/22.7/26.8
Air Flow in Supply/Exhaust Mode (L/M/H) (CMH)*	10/18/25	Regeneration Efficiency (%)	≤97
Air Flow in Regeneration Mode (L/M/H) (CMH)*	5/9/12	SEC Class	A+
Max Airflow (Under Fan Boost Mode) (CMH)*	30	Adaptable Wall Thickness (mm)	270~500
Input Power (L/M/H) (W)	4/5.6/7	Weight (kg)	3.5

Note: The airflow in supply/exhaust mode with F7 filter is about 8/11.5/16CMH, and the relative parameters will be adjusted accordingly.



**Guangzhou Airwoods Environment Technology Co., Ltd.**

www.airwoods.com www.airwoods-comfort.com info@airwoods.com